

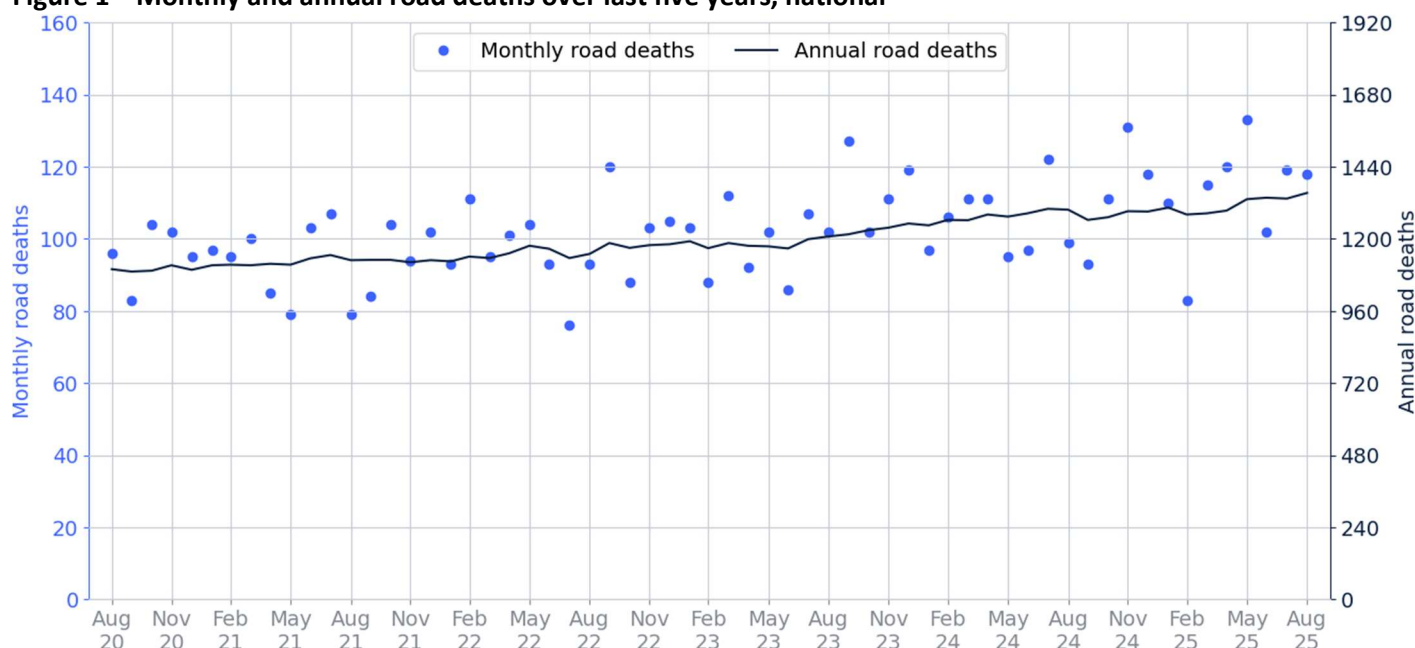


# Road Deaths Australia - August 2025

## This month's key figures

- There was a total of 118 road deaths during the month of August 2025. The current figure is 25.8% higher than the average for August over the previous 5 years (2020-2024).
- During the 12 months ending August 2025, there were 1,353 road deaths. This is a 4.3% increase compared to the 12-month period ending August 2024.
- Presently, the rate of annual deaths per 100,000 population stands at 4.9. This is a 2.8% increase compared to the rate for the 12-month period ending August 2024.

**Figure 1 Monthly and annual road deaths over last five years, national**



**Table 1 Monthly fatalities over the last 5 years**

Year	Jan	Feb	Mar	Apr	May	Jun	Jul	Aug	Sep	Oct	Nov	Dec	Total
2020	82	93	102	80	82	82	96	96	83	104	102	95	1,097
2021	97	95	100	85	79	103	107	79	84	104	94	102	1,129
2022	93	111	95	101	104	93	76	93	120	88	103	105	1,182
2023	103	88	112	92	102	86	107	102	127	102	111	119	1,251
2024	97	106	111	111	95	97	122	99	93	111	131	118	1,291
2025	110	83	115	120	133	102	119	118	—	—	—	—	900

# 1. Monthly and annual deaths by jurisdiction – 2 years

Figure 2 Monthly and annual road deaths over last two years, by jurisdiction



## 2. Deaths by jurisdiction

Table 2.1 Current month

Current month	NSW	VIC	QLD	SA	WA	TAS	NT	ACT	Total
August 2024	15	24	27	8	15	4	6	0	99
August 2025	39	16	39	11	7	2	4	0	118
Latest per cent change	160.0%	-33.3%	44.4%	37.5%	-53.3%	-50.0%	-33.3%	0.0%	19.2%

Table 2.2 Calendar year to date

Year to date	NSW	VIC	QLD	SA	WA	TAS	NT	ACT	Total
Jan to Aug 2024	202	190	197	57	121	19	46	6	838
Jan to Aug 2025	251	196	206	57	129	30	28	3	900
Latest per cent change	24.3%	3.2%	4.6%	0.0%	6.6%	57.9%	-39.1%	-50.0%	7.4%

Table 2.3 12 months ending August

12 months ending August	NSW	VIC	QLD	SA	WA	TAS	NT	ACT	Total
2021	271	211	298	97	168	36	36	12	1,129
2022	273	245	284	82	156	47	49	14	1,150
2023	323	271	280	98	172	32	22	10	1,208
2024	323	296	290	99	182	32	68	7	1,297
2025	375	290	311	89	196	42	42	8	1,353
Latest per cent change	16.1%	-2.0%	7.2%	-10.1%	7.7%	31.2%	-38.2%	14.3%	4.3%

## 3. Annual deaths per 100,000 population

Table 3.1 12 months ending August

12 months ending August	NSW	VIC	QLD	SA	WA	TAS	NT	ACT	Total
2021	3.3	3.2	5.7	5.4	6.1	6.4	14.5	2.7	4.4
2022	3.4	3.7	5.4	4.5	5.6	8.2	19.5	3.1	4.4
2023	3.9	4.0	5.2	5.3	6.0	5.6	8.6	2.1	4.6
2024	3.8	4.3	5.2	5.3	6.2	5.6	26.2	1.5	4.8
2025	4.4	4.1	5.5	4.7	6.5	7.3	16.0	1.7	4.9
Latest per cent change	14.8%	-3.6%	5.4%	-11.0%	5.4%	30.9%	-38.9%	12.8%	2.8%

Table 3.2 Calendar year period

Calendar year	NSW	VIC	QLD	SA	WA	TAS	NT	ACT	Total
2020	3.5	3.2	5.4	5.2	5.7	6.8	12.5	1.6	4.3
2021	3.4	3.5	5.3	5.5	6.0	6.2	14.1	2.4	4.4
2022	3.4	3.6	5.6	3.9	6.3	8.7	20.5	3.9	4.5
2023	4.1	4.3	5.0	6.3	5.5	5.6	12.0	0.8	4.7
2024	3.8	4.1	5.4	4.7	6.3	5.4	23.0	2.3	4.7
Latest per cent change	-5.7%	-5.9%	7.8%	-24.9%	15.5%	-3.3%	91.1%	170.8%	1.2%

## 4. Deaths by road user, age group, gender and remoteness area

**Table 4.1 By road user**

12 months ending August	Driver	Passenger	Pedestrian	Motorcyclist	Pedal cyclist	Total
2021	559	177	130	225	32	1,129
2022	552	183	139	232	35	1,150
2023	555	193	169	243	44	1,208
2024	570	220	164	287	36	1,297
2025	624	206	206	260	34	1,353
<b>Latest per cent change</b>	<b>9.5%</b>	<b>-6.4%</b>	<b>25.6%</b>	<b>-9.4%</b>	<b>-5.6%</b>	<b>4.3%</b>

Motorcyclist and Pedal cyclist categories include pillion passengers

Totals may include unknown values

**Table 4.2 By age group (years)**

12 months ending August	0 to 7	8 to 16	17 to 25	26 to 39	40 to 64	65 to 74	≥ 75	Total
2021	19	42	214	272	354	98	129	1,129
2022	22	42	227	234	353	127	140	1,150
2023	9	50	229	286	365	117	152	1,208
2024	22	47	244	270	404	147	160	1,297
2025	20	42	228	300	414	150	196	1,353
<b>Latest per cent change</b>	<b>-9.1%</b>	<b>-10.6%</b>	<b>-6.6%</b>	<b>11.1%</b>	<b>2.5%</b>	<b>2.0%</b>	<b>22.5%</b>	<b>4.3%</b>

Totals may include unknown values

**Table 4.3 By gender**

12 months ending August	Male	Female	Total
2021	840	289	1,129
2022	870	279	1,150
2023	889	318	1,208
2024	1,001	294	1,297
2025	1,005	347	1,353
<b>Latest per cent change</b>	<b>0.4%</b>	<b>18.0%</b>	<b>4.3%</b>

Totals may include unknown values

**Table 4.4 By remoteness**

12 months ending August	Major cities	Inner regional	Outer regional	Remote	Very remote	Unknown	Total
2021	360	354	273	53	70	19	1,129
2022	393	380	245	68	58	6	1,150
2023	447	417	255	39	40	10	1,208
2024	405	384	267	67	46	128	1,297
2025	395	386	255	31	25	261	1,353
<b>Latest per cent change</b>	<b>-2.5%</b>	<b>0.5%</b>	<b>-4.5%</b>	<b>-53.7%</b>	<b>-45.7%</b>	<b>103.9%</b>	<b>4.3%</b>

Totals may include unknown values

## 5. Fatal crashes: counts and characteristics

**Table 5.1 By number of vehicles involved in a crash**

12 months ending August	Single	Multiple	Total
2021	586	464	1,050
2022	651	421	1,072
2023	621	495	1,119
2024	648	523	1,174
2025	678	573	1,254
<b>Latest per cent change</b>	<b>4.6%</b>	<b>9.6%</b>	<b>6.8%</b>

Totals may include unknown values

**Table 5.2 By posted speed limit (km/h)**

12 months ending August	≤ 40	50	60 to 75	80 to 90	100	≥ 110	Total
2021	14	124	237	167	347	148	1,050
2022	21	118	274	180	348	124	1,072
2023	33	136	294	191	319	141	1,119
2024	32	139	306	200	347	140	1,174
2025	29	148	312	211	345	139	1,254
<b>Latest per cent change</b>	<b>-9.4%</b>	<b>6.5%</b>	<b>2.0%</b>	<b>5.5%</b>	<b>-0.6%</b>	<b>-0.7%</b>	<b>6.8%</b>

Totals may include unknown values

**Table 5.3 By day of week**

12 months ending August	Weekday	Weekend	Total
2021	614	436	1,050
2022	664	408	1,072
2023	695	424	1,119
2024	750	424	1,174
2025	762	492	1,254
<b>Latest per cent change</b>	<b>1.6%</b>	<b>16.0%</b>	<b>6.8%</b>

'Weekday' refers to 6am Monday through to 5:59pm Friday

Totals may include unknown values

**Table 5.4 By time of day**

12 months ending August	Day	Night	Total
2021	632	418	1,050
2022	648	424	1,072
2023	659	460	1,119
2024	735	439	1,174
2025	771	482	1,254
<b>Latest per cent change</b>	<b>4.9%</b>	<b>9.8%</b>	<b>6.8%</b>

'Day' refers to 6am through to 5:59pm

Totals may include unknown values

# Appendix

**Road deaths from recent months are preliminary and subject to revision.**

## Road death

The road safety agencies in each jurisdiction use detailed criteria to define road crashes and road deaths. Briefly, a death is classified as resulting from a road crash if the crash occurred on a public road, is unintentional and the death occurred within 30 days from injuries sustained in the crash.

## Fatality rates

Fatality rates per population are based on road deaths over the last 12-months, and the population at the midpoint of that period. Population estimates are sourced from ABS' National, state and territory population statistics. The midpoint population is interpolated if necessary.

## Other sources for tables in this bulletin

The underlying database used to produce this bulletin — the Australian Road Deaths Database is available for data extraction at <https://catalogue.data.infrastructure.gov.au/dataset/australian-road-deaths-database>

# Data sources

Data are obtained from:

- Transport for NSW
- Department of Transport, Victoria
- Department of Transport and Main Roads, Queensland
- Department for Infrastructure and Transport, SA
- Western Australia Police
- Department of State Growth, Tasmania
- Department of Infrastructure, Planning and Logistics, NT
- Transport Canberra and City Services Directorate, ACT
- Australian Bureau of Statistics (National, state and territory population)

# Contact us

For further information about data in this bulletin, contact:

- National Road Safety Data Hub: <https://datahub.roadsafety.gov.au>
- Email: [roadsafetystatistics@infrastructure.gov.au](mailto:roadsafetystatistics@infrastructure.gov.au)

Bureaux Reference: 2025-102

ISSN: 1449-1168

© Copyright. Creative Commons 3.0

Disclaimers | Department of Infrastructure, Transport, Regional Development, Communications, Sport and the Arts at <https://www.infrastructure.gov.au/disclaimers>