



Road Deaths Australia - December 2025

This month's key figures

- There was a total of 106 road deaths during the month of December 2025. The current figure is 1.7% lower than the average for December over the previous 5 years (2020-2024).
- During the 12 months ending December 2025, there were 1,314 road deaths. This is a 1.7% increase compared to the 12-month period ending December 2024.
- Presently, the rate of annual deaths per 100,000 population stands at 4.8. This is a 0.2% increase compared to the rate for the 12-month period ending December 2024.

Figure 1 Monthly and annual road deaths over last five years, national

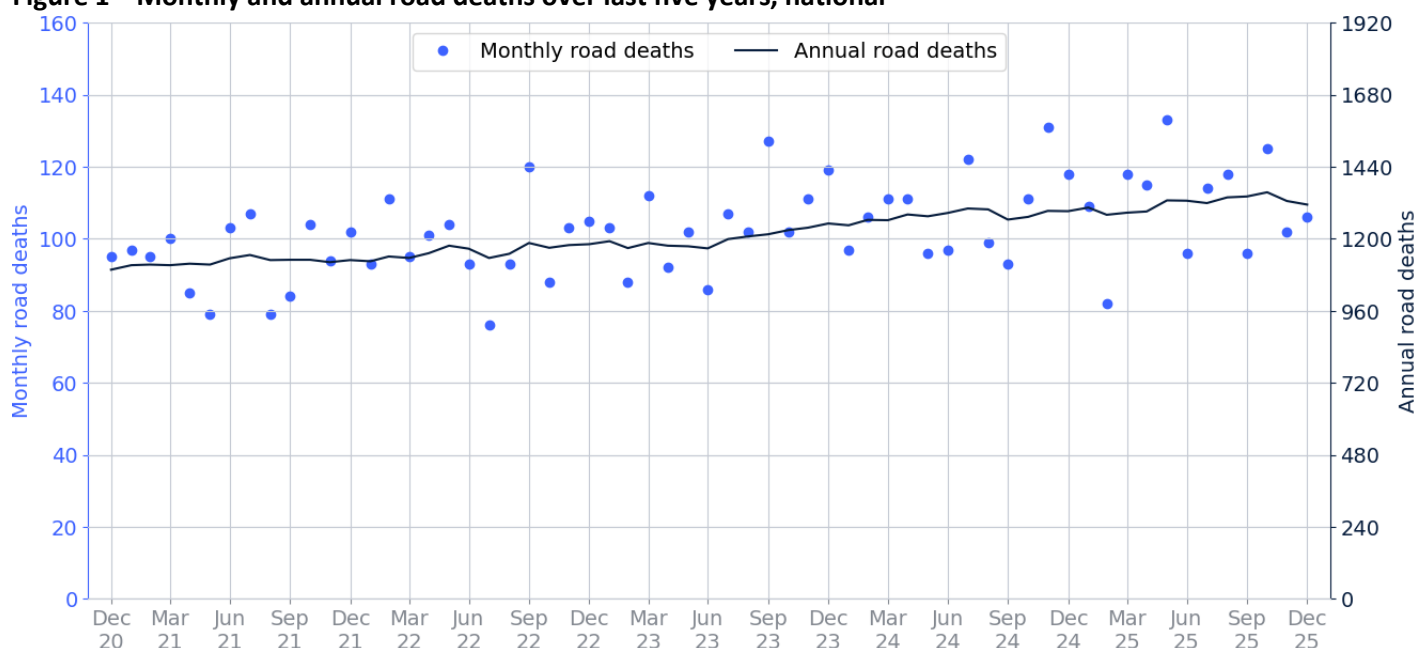


Table 1 Monthly fatalities over the last 5 years

Year	Jan	Feb	Mar	Apr	May	Jun	Jul	Aug	Sep	Oct	Nov	Dec	Total
2020	82	93	102	80	82	82	96	96	83	104	102	95	1,097
2021	97	95	100	85	79	103	107	79	84	104	94	102	1,129
2022	93	111	95	101	104	93	76	93	120	88	103	105	1,182
2023	103	88	112	92	102	86	107	102	127	102	111	119	1,251
2024	97	106	111	111	96	97	122	99	93	111	131	118	1,292
2025	109	82	118	115	133	96	114	118	96	125	102	106	1,314

1. Monthly and annual deaths by jurisdiction – 2 years

Figure 2 Monthly and annual road deaths over last two years, by jurisdiction



2. Deaths by jurisdiction

Table 2.1 Current month

Current month	NSW	VIC	QLD	SA	WA	TAS	NT	ACT	Total
December 2024	33	19	25	10	23	5	2	1	118
December 2025	32	28	22	7	11	2	2	2	106
Latest per cent change	-3.0%	47.4%	-12.0%	-30.0%	-52.2%	-60.0%	0.0%	100.0%	-10.2%

Table 2.2 Calendar year to date

Year to date	NSW	VIC	QLD	SA	WA	TAS	NT	ACT	Total
Jan to Dec 2024	327	284	302	89	188	31	60	11	1,292
Jan to Dec 2025	355	290	308	87	183	44	38	9	1,314
Latest per cent change	8.6%	2.1%	2.0%	-2.2%	-2.7%	41.9%	-36.7%	-18.2%	1.7%

Table 2.3 12 months ending December

12 months ending December	NSW	VIC	QLD	SA	WA	TAS	NT	ACT	Total
2021	275	231	277	99	166	35	35	11	1,129
2022	281	240	295	71	175	50	52	18	1,182
2023	340	295	274	117	158	32	31	4	1,251
2024	327	284	302	89	188	31	60	11	1,292
2025	355	290	308	87	183	44	38	9	1,314
Latest per cent change	8.6%	2.1%	2.0%	-2.2%	-2.7%	41.9%	-36.7%	-18.2%	1.7%

3. Annual deaths per 100,000 population

Table 3.1 12 months ending December

12 months ending December	NSW	VIC	QLD	SA	WA	TAS	NT	ACT	Total
2021	3.4	3.5	5.3	5.5	6.0	6.2	14.1	2.4	4.4
2022	3.4	3.6	5.6	3.9	6.3	8.7	20.5	3.9	4.5
2023	4.1	4.3	5.0	6.3	5.5	5.6	12.0	0.8	4.7
2024	3.9	4.1	5.4	4.7	6.3	5.4	23.0	2.3	4.8
2025	4.1	4.1	5.4	4.6	6.0	7.6	14.4	1.9	4.8
Latest per cent change	7.3%	0.3%	0.2%	-3.3%	-4.8%	41.6%	-37.5%	-19.3%	0.2%

Table 3.2 Calendar year period

Calendar year	NSW	VIC	QLD	SA	WA	TAS	NT	ACT	Total
2021	3.4	3.5	5.3	5.5	6.0	6.2	14.1	2.4	4.4
2022	3.4	3.6	5.6	3.9	6.3	8.7	20.5	3.9	4.5
2023	4.1	4.3	5.0	6.3	5.5	5.6	12.0	0.8	4.7
2024	3.9	4.1	5.4	4.7	6.3	5.4	23.0	2.3	4.8
2025	4.1	4.1	5.4	4.6	6.0	7.6	14.4	1.9	4.8
Latest per cent change	7.3%	0.3%	0.2%	-3.3%	-4.8%	41.6%	-37.5%	-19.3%	0.1%

4. Deaths by road user, age group, gender and remoteness area

Table 4.1 By road user

12 months ending December	Driver	Passenger	Pedestrian	Motorcyclist	Pedal cyclist	Total
2021	529	182	133	237	42	1,129
2022	542	188	162	245	35	1,182
2023	594	206	157	252	33	1,251
2024	586	199	174	278	37	1,292
2025	571	204	197	266	49	1,314
Latest per cent change	-2.6%	2.5%	13.2%	-4.3%	32.4%	1.7%

Motorcyclist and Pedal cyclist categories include pillion passengers

Totals may include unknown values

Table 4.2 By age group (years)

12 months ending December	0 to 7	8 to 16	17 to 25	26 to 39	40 to 64	65 to 74	≥ 75	Total
2021	22	43	212	243	351	113	140	1,129
2022	15	50	227	267	366	116	140	1,182
2023	14	48	241	280	378	136	153	1,251
2024	19	43	240	276	403	143	166	1,292
2025	25	38	219	292	406	136	189	1,314
Latest per cent change	31.6%	-11.6%	-8.8%	5.8%	0.7%	-4.9%	13.9%	1.7%

Totals may include unknown values

Table 4.3 By gender

12 months ending December	Male	Female	Total
2021	852	276	1,129
2022	877	304	1,182
2023	947	304	1,251
2024	965	324	1,292
2025	997	317	1,314
Latest per cent change	3.3%	-2.2%	1.7%

Totals may include unknown values

Table 4.4 By remoteness

12 months ending December	Major cities	Inner regional	Outer regional	Remote	Very remote	Unknown	Total
2021	389	355	259	57	52	17	1,129
2022	410	377	258	63	65	9	1,182
2023	435	446	267	56	45	2	1,251
2024	452	422	287	68	56	7	1,292
2025	397	358	244	33	21	261	1,314
Latest per cent change	-12.2%	-15.2%	-15.0%	-51.5%	-62.5%	3628.6%	1.7%

Totals may include unknown values

5. Fatal crashes: counts and characteristics

Table 5.1 By number of vehicles involved in a crash

12 months ending December	Single	Multiple	Total
2021	609	439	1,048
2022	665	440	1,107
2023	625	513	1,142
2024	628	557	1,185
2025	675	547	1,225
Latest per cent change	7.5%	-1.8%	3.4%

Totals may include unknown values

Table 5.2 By posted speed limit (km/h)

12 months ending December	≤ 40	50	60 to 75	80 to 90	100	≥ 110	Total
2021	18	132	251	159	333	142	1,048
2022	22	118	302	185	337	139	1,107
2023	35	148	283	192	337	140	1,142
2024	32	125	302	216	360	137	1,185
2025	30	148	315	185	328	135	1,225
Latest per cent change	-6.2%	18.4%	4.3%	-14.4%	-8.9%	-1.5%	3.4%

Totals may include unknown values

Table 5.3 By day of week

12 months ending December	Weekday	Weekend	Total
2021	649	399	1,048
2022	650	457	1,107
2023	722	420	1,142
2024	744	441	1,185
2025	771	454	1,225
Latest per cent change	3.6%	2.9%	3.4%

'Weekday' refers to 6am Monday through to 5:59pm Friday

Totals may include unknown values

Table 5.4 By time of day

12 months ending December	Day	Night	Total
2021	652	396	1,048
2022	634	473	1,107
2023	707	435	1,142
2024	742	443	1,185
2025	741	484	1,225
Latest per cent change	-0.1%	9.3%	3.4%

'Day' refers to 6am through to 5:59pm

Totals may include unknown values

Appendix

Road deaths from recent months are preliminary and subject to revision.

Road death

The road safety agencies in each jurisdiction use detailed criteria to define road crashes and road deaths. Briefly, a death is classified as resulting from a road crash if the crash occurred on a public road, is unintentional and the death occurred within 30 days from injuries sustained in the crash.

Fatality rates

Fatality rates per population are based on road deaths over the last 12-months, and the population at the midpoint of that period. Population estimates are sourced from ABS' National, state and territory population statistics. The midpoint population is interpolated if necessary.

Other sources for tables in this bulletin

The underlying database used to produce this bulletin — the Australian Road Deaths Database — is available for data extraction at <https://catalogue.data.infrastructure.gov.au/dataset/australian-road-deaths-database>

Data sources

Data are obtained from:

- Transport for NSW
- Department of Transport, Victoria
- Department of Transport and Main Roads, Queensland
- Department for Infrastructure and Transport, SA
- Western Australia Police
- Department of State Growth, Tasmania
- Department of Infrastructure, Planning and Logistics, NT
- Transport Canberra and City Services Directorate, ACT
- Australian Bureau of Statistics (National, state and territory population)

Contact us

For further information about data in this bulletin, contact:

- National Road Safety Data Hub: <https://datahub.roadsafety.gov.au>
- Email: roadsafetystatistics@infrastructure.gov.au

Bureaux Reference: 2026-001

ISSN: 1449-1168

© Copyright. Creative Commons 3.0

Disclaimers | Department of Infrastructure, Transport, Regional Development, Communications, Sport and the Arts at <https://www.infrastructure.gov.au/disclaimers>