



Road Deaths Australia - July 2025

This month's key figures

- There was a total of 119 road deaths during the month of July 2025. The current figure is 17.1% higher than the average for July over the previous 5 years (2020-2024).
- During the 12 months ending July 2025, there were 1,340 road deaths. This is a 2.9% increase compared to the 12-month period ending July 2024.
- Presently, the rate of annual deaths per 100,000 population stands at 4.9. This is a 1.3% increase compared to the rate for the 12-month period ending July 2024.

Figure 1 Monthly and annual road deaths over last five years, national

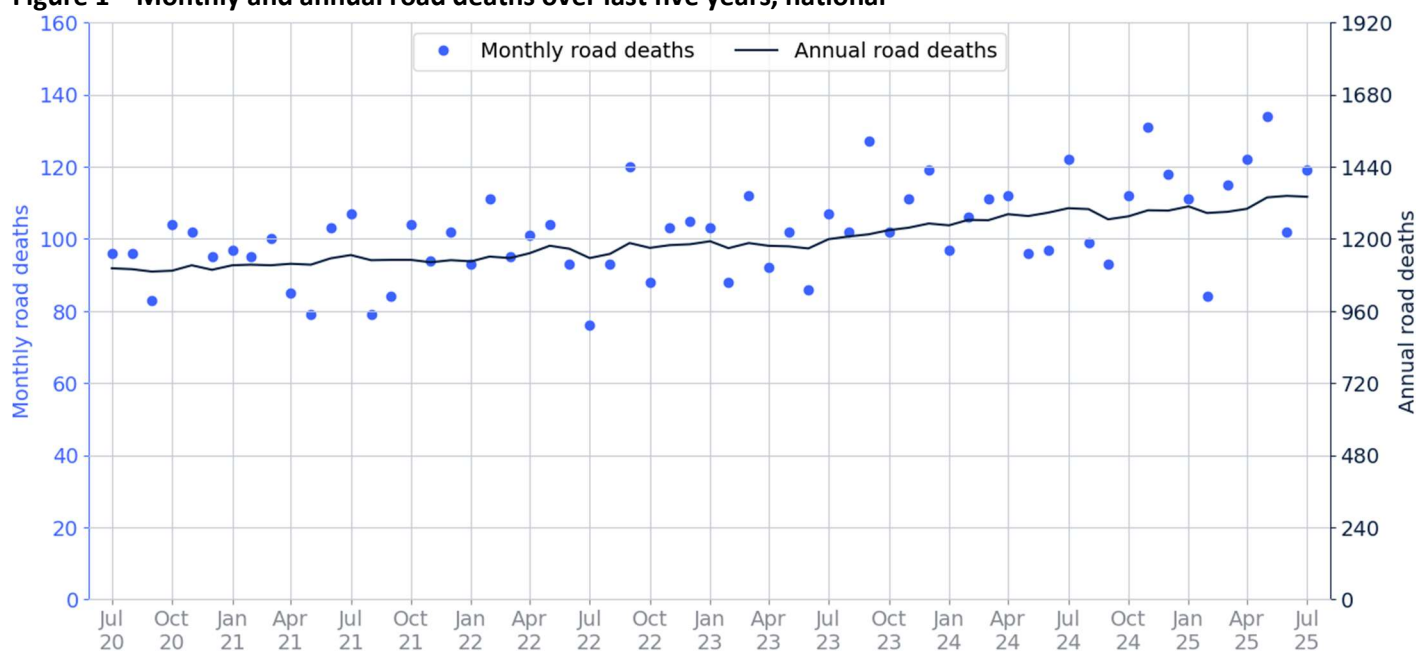


Table 1 Monthly fatalities over the last 5 years

Year	Jan	Feb	Mar	Apr	May	Jun	Jul	Aug	Sep	Oct	Nov	Dec	Total
2020	82	93	102	80	82	82	96	96	83	104	102	95	1,097
2021	97	95	100	85	79	103	107	79	84	104	94	102	1,129
2022	93	111	95	101	104	93	76	93	120	88	103	105	1,182
2023	103	88	112	92	102	86	107	102	127	102	111	119	1,251
2024	97	106	111	112	96	97	122	99	93	112	131	118	1,294
2025	111	84	115	122	134	102	119	—	—	—	—	—	787

1. Monthly and annual deaths by jurisdiction – 2 years

Figure 2 Monthly and annual road deaths over last two years, by jurisdiction



2. Deaths by jurisdiction

Table 2.1 Current month

Current month	NSW	VIC	QLD	SA	WA	TAS	NT	ACT	Total
July 2024	31	30	25	6	15	6	9	0	122
July 2025	23	31	28	9	22	3	3	0	119
Latest per cent change	-25.8%	3.3%	12.0%	50.0%	46.7%	-50.0%	-66.7%	0.0%	-2.5%

Table 2.2 Calendar year to date

Year to date	NSW	VIC	QLD	SA	WA	TAS	NT	ACT	Total
Jan to Jul 2024	189	166	170	49	106	15	40	6	741
Jan to Jul 2025	215	181	167	47	122	28	24	3	787
Latest per cent change	13.8%	9.0%	-1.8%	-4.1%	15.1%	86.7%	-40.0%	-50.0%	6.2%

Table 2.3 12 months ending July

12 months ending July	NSW	VIC	QLD	SA	WA	TAS	NT	ACT	Total
2021	281	208	303	98	170	37	38	11	1,146
2022	274	243	282	81	150	48	44	14	1,136
2023	310	268	276	98	175	33	28	11	1,199
2024	338	294	291	96	181	31	64	7	1,302
2025	355	299	299	87	204	44	44	8	1,340
Latest per cent change	5.0%	1.7%	2.7%	-9.4%	12.7%	41.9%	-31.2%	14.3%	2.9%

3. Annual deaths per 100,000 population

Table 3.1 12 months ending July

12 months ending July	NSW	VIC	QLD	SA	WA	TAS	NT	ACT	Total
2021	3.5	3.2	5.8	5.5	6.2	6.6	15.3	2.5	4.5
2022	3.4	3.7	5.4	4.5	5.4	8.4	17.5	3.1	4.4
2023	3.7	4.0	5.1	5.3	6.1	5.8	11.0	2.4	4.5
2024	4.0	4.3	5.3	5.1	6.1	5.4	24.7	1.5	4.8
2025	4.2	4.3	5.3	4.6	6.8	7.6	16.8	1.7	4.9
Latest per cent change	3.8%	-0.1%	0.9%	-10.3%	10.2%	41.5%	-32.1%	12.7%	1.3%

Table 3.2 Calendar year period

Calendar year	NSW	VIC	QLD	SA	WA	TAS	NT	ACT	Total
2020	3.5	3.2	5.4	5.2	5.7	6.8	12.5	1.6	4.3
2021	3.4	3.5	5.3	5.5	6.0	6.2	14.1	2.4	4.4
2022	3.4	3.6	5.6	3.9	6.3	8.7	20.5	3.9	4.5
2023	4.1	4.3	5.0	6.3	5.5	5.6	12.0	0.8	4.7
2024	3.9	4.1	5.4	4.7	6.3	5.4	23.0	2.3	4.8
Latest per cent change	-4.8%	-5.9%	7.8%	-24.9%	15.5%	-3.3%	91.1%	170.8%	1.4%

4. Deaths by road user, age group, gender and remoteness area

Table 4.1 By road user

12 months ending July	Driver	Passenger	Pedestrian	Motorcyclist	Pedal cyclist	Total
2021	564	182	132	228	34	1,146
2022	542	184	144	221	37	1,136
2023	551	193	160	247	43	1,199
2024	585	221	161	282	33	1,302
2025	611	206	205	260	36	1,340
Latest per cent change	4.4%	-6.8%	27.3%	-7.8%	9.1%	2.9%

Motorcyclist and Pedal cyclist categories include pillion passengers

Totals may include unknown values

Table 4.2 By age group (years)

12 months ending July	0 to 7	8 to 16	17 to 25	26 to 39	40 to 64	65 to 74	≥ 75	Total
2021	22	40	214	284	362	95	128	1,146
2022	22	45	223	223	347	125	146	1,136
2023	10	48	229	285	364	115	148	1,199
2024	18	49	244	275	399	148	167	1,302
2025	23	41	221	290	421	149	191	1,340
Latest per cent change	27.8%	-16.3%	-9.4%	5.5%	5.5%	0.7%	14.4%	2.9%

Totals may include unknown values

Table 4.3 By gender

12 months ending July	Male	Female	Total
2021	844	302	1,146
2022	864	271	1,136
2023	872	326	1,199
2024	1,009	291	1,302
2025	993	346	1,340
Latest per cent change	-1.6%	18.9%	2.9%

Totals may include unknown values

Table 4.4 By remoteness

12 months ending July	Major cities	Inner regional	Outer regional	Remote	Very remote	Unknown	Total
2021	365	372	267	50	76	16	1,146
2022	390	381	241	67	48	9	1,136
2023	445	403	252	40	49	10	1,199
2024	406	400	270	69	45	112	1,302
2025	386	374	253	33	25	269	1,340
Latest per cent change	-4.9%	-6.5%	-6.3%	-52.2%	-44.4%	140.2%	2.9%

Totals may include unknown values

5. Fatal crashes: counts and characteristics

Table 5.1 By number of vehicles involved in a crash

12 months ending July	Single	Multiple	Total
2021	599	466	1,065
2022	648	409	1,057
2023	611	493	1,107
2024	651	527	1,181
2025	665	574	1,242
Latest per cent change	2.2%	8.9%	5.2%

Totals may include unknown values

Table 5.2 By posted speed limit (km/h)

12 months ending July	≤ 40	50	60 to 75	80 to 90	100	≥ 110	Total
2021	13	122	248	176	347	147	1,065
2022	21	118	267	174	344	124	1,057
2023	32	127	293	187	322	141	1,107
2024	32	150	304	201	343	141	1,181
2025	29	134	310	218	339	138	1,242
Latest per cent change	-9.4%	-10.7%	2.0%	8.5%	-1.2%	-2.1%	5.2%

Totals may include unknown values

Table 5.3 By day of week

12 months ending July	Weekday	Weekend	Total
2021	618	447	1,065
2022	658	399	1,057
2023	686	421	1,107
2024	755	426	1,181
2025	755	487	1,242
Latest per cent change	0.0%	14.3%	5.2%

'Weekday' refers to 6am Monday through to 5:59pm Friday

Totals may include unknown values

Table 5.4 By time of day

12 months ending July	Day	Night	Total
2021	645	420	1,065
2022	642	414	1,057
2023	664	443	1,107
2024	732	449	1,181
2025	759	482	1,242
Latest per cent change	3.7%	7.3%	5.2%

'Day' refers to 6am through to 5:59pm

Totals may include unknown values

Appendix

Road deaths from recent months are preliminary and subject to revision.

Road death

The road safety agencies in each jurisdiction use detailed criteria to define road crashes and road deaths. Briefly, a death is classified as resulting from a road crash if the crash occurred on a public road, is unintentional and the death occurred within 30 days from injuries sustained in the crash.

Fatality rates

Fatality rates per population are based on road deaths over the last 12-months, and the population at the midpoint of that period. Population estimates are sourced from ABS' National, state and territory population statistics. The midpoint population is interpolated if necessary.

Other sources for tables in this bulletin

The underlying database used to produce this bulletin — the Australian Road Deaths Database is available for data extraction at <https://catalogue.data.infrastructure.gov.au/dataset/australian-road-deaths-database>

Data sources

Data are obtained from:

- Transport for NSW
- Department of Transport, Victoria
- Department of Transport and Main Roads, Queensland
- Department for Infrastructure and Transport, SA
- Western Australia Police
- Department of State Growth, Tasmania
- Department of Infrastructure, Planning and Logistics, NT
- Transport Canberra and City Services Directorate, ACT
- Australian Bureau of Statistics (National, state and territory population)

Contact us

For further information about data in this bulletin, contact:

- National Road Safety Data Hub: <https://datahub.roadsafety.gov.au>
- Email: roadsafetystatistics@infrastructure.gov.au

Bureaux Reference: 2025-091

ISSN: 1449-1168

© Copyright. Creative Commons 3.0

Disclaimers | Department of Infrastructure, Transport, Regional Development, Communications, Sport and the Arts at <https://www.infrastructure.gov.au/disclaimers>